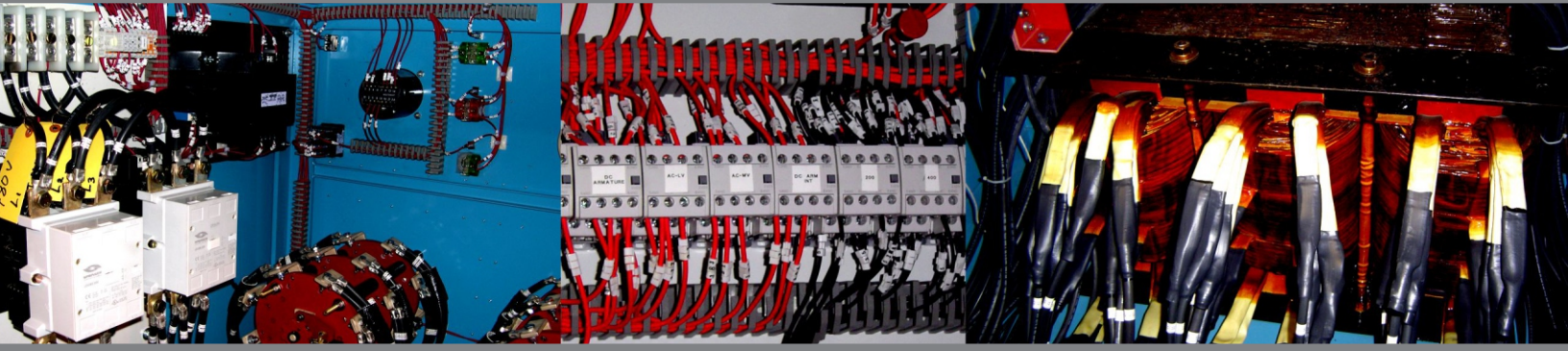


# JENKINS

## Product Data Sheet 200KVA Motor Test System



### Product Details

The 200KVA Motor Test System is designed for nominal no-load motor testing of up to 750 HP motors at 480 VAC. With the standard Jenkins Test Documentation System it will give your shop the ability to provide your clients with full-service motor testing.

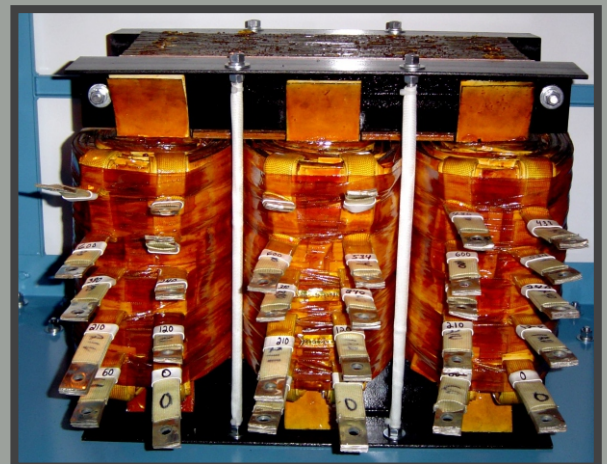
- Engineered to maintain full capacity AC and outputs at rated currents for 8 hours.
- AC starting provided by current limited soft starter or with full-voltage, incremental tap adjustments.
- Independent, variable voltage adjustment provided on DC Field and Armature supplies.
- Simple, Start-Run-Stop push-button operation with a clean, logical controls layout and clear LED instrumentation to display active outputs.
- Overload protection, meter set points, trips and electrical interlocks on tap switches.
- Constructed with high quality, conservatively rated components from quality manufacturers.

### Jenkins Motor Test Systems

Jenkins Motor Test Systems are built on the principles of safe, simple operation and dependable service. With over forty years of experience building electrical test systems to meet client requirements, and a century repairing and testing electrical apparatus ourselves, Jenkins is uniquely qualified to deliver a test system that will meet your needs. Our line of high performance AC-DC Test Systems are specifically designed for motor and transformer testing, and are fully customizable.

### Custom Testing Transformers

Designed and built at Jenkins to our rigid specifications, the testing transformer provides a solid, yet flexible foundation for years of reliable motor test system operation. When combined with an input percentage tap switch and multiple output tap switches, the Testing Transformer can provide a wide range of voltages, closely duplicating a variable transformer, while providing greater reliability during continuous testing, for application to almost any motor.



# Technical Specifications, Upgrades and Ordering Information

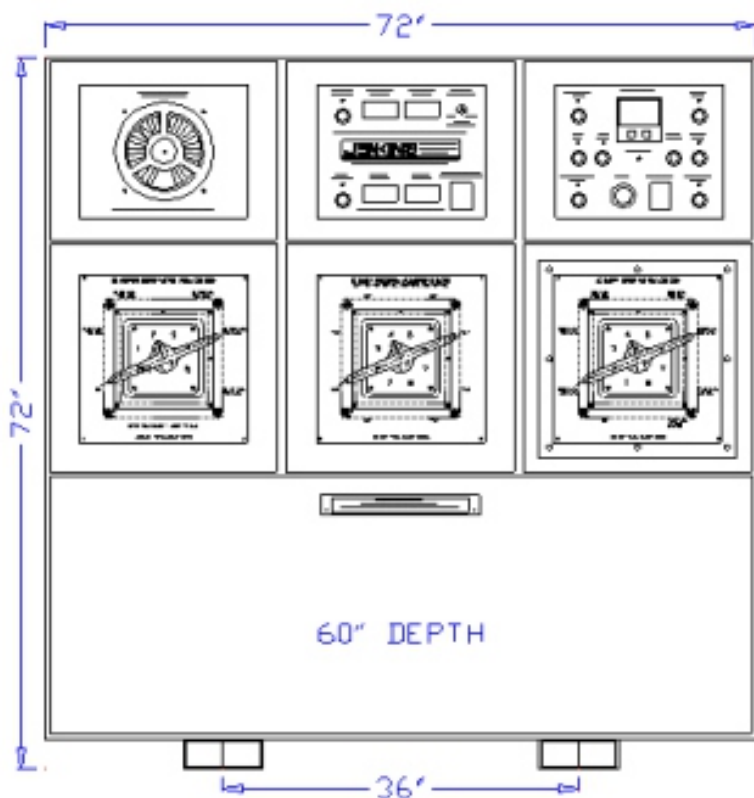
## 200KVA Motor Test System

### Output Ratings (Current Ratings are Continuous)

AC Outputs	AC Adjustments *	DC Field Output	DC Armature Outputs
OFF	50%	0 - 500 V @ 10 A	OFF
120 V @ 400 A	60%		0 - 40 V @ 300 A
240 V @ 400 A	70%		0 - 80 V @ 300 A
480 V @ 250 A	80%		0 - 160 V @ 300 A
600 V @ 200 A	90%		0 - 320 V @ 300 A
1200 V @ 100 A	100%		0 - 510 V @ 250 A
2400 V @ 50 A	110%		
4200 V @ 29 A	115%		

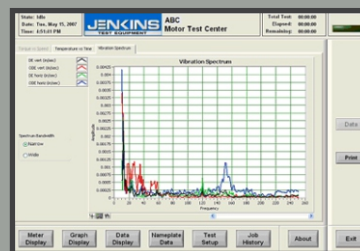
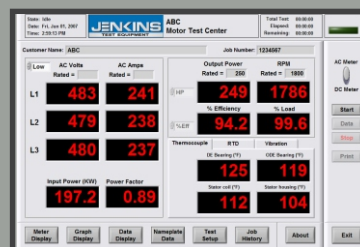
\* Via Rotary Tap Switch

### Physical Dimensions



### Optional Upgrades

- Upsized Field Output Rating
- Upsized Armature Output Rating
- TDS Temperature and Vibration Module
  - 4 Each: TC, RTD and Vibration Channels
  - Graphical Data Display



### Ordering Information

Description	Part Number	List Price
200 KVA Motor Test System	S200MV480ACDC	\$104,310.00
TDS Temp & Vibration Module	TDS - TV	\$ 8,500.00

**JENKINS**

P: 800.438.3003  
 F: 800.392.2612  
 sales@jenkins.com  
 www.jenkins.com

**ESSEX BROWNELL**

P: 800.774.4643  
 F: 800.768.9782  
 www.essexbrownell.com