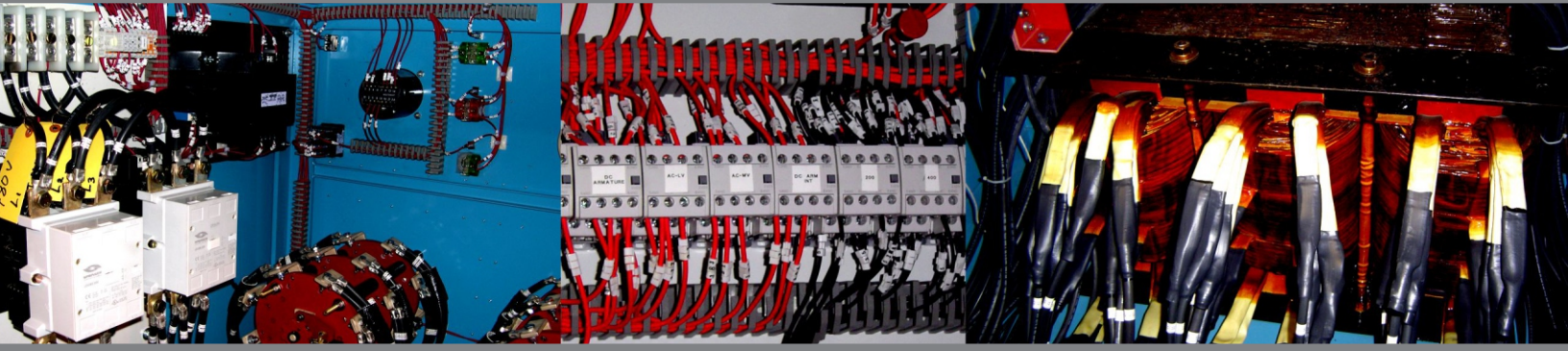


JENKINS

Product Data Sheet Test Documentation System (TDS)



Product Overview

The Jenkins Test Documentation System (TDS) is a state-of-the-art display and documentation package for electrical equipment test. With a simple, intuitive interface, the base TDS displays real-time AC and DC voltage, current, input power and power factor during tests, records that data to a searchable database, and prints a test report to be kept on file and/or provided to the client.

With a simple connection to an AW Dynamometer controller the TDS acquires, displays and records mechanical data such as output power, rpm, % efficiency, and % load during load tests.

The optional temperature and vibration module significantly expands your test capabilities, allowing you to provide your clients with comprehensive diagnostic and test services within a single platform.

The TDS can be purchased as an option on a new Jenkins Motor Test System, or as an upgrade to your existing Jenkins or third party test supply.

Key Software Features

The TDS Software application was initially developed for our own internal motor testing operations. It has been tested and improved in a motorshop environment just like yours. Made to be operated by motor technicians, the TDS is designed to impress your clients with a clear, understandable display and detailed test reports. The TDS application includes the following features:

- Simple setup screens allow input of customer and nameplate data and test configuration including test duration, sample frequency and channel definition.
- Meter screens display real-time test data in a clear format for test operators.
- Interfaces with AW Dynamometer controllers to display and record load test data.
- Temperature and Vibration module displays detailed graphs of temperature vs. time and vibration spectrum plots (4 channels of each: RTD, Thermocouple, Accelerometer)
- Printable test reports provide detailed motor nameplate and test data and can be customized with client information.
- Searchable database allows you to recall and print past test reports based on customer name, motor manufacturer, job #, serial # or by a date range.
- Interfaces with ACS software through your internal network to save test files in ACS job folders.

Jenkins TDS is designed and supported by Nexjen Systems, LLC, our in-house systems integration division.

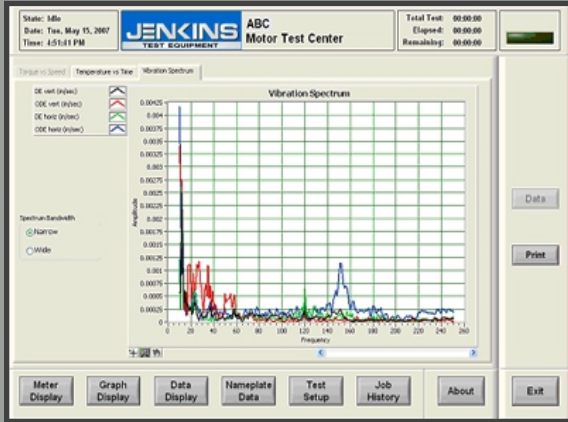


Additional Product Information

Graphical Analysis and Reporting

TDS Hardware Options

The optional Temperature and Vibration Module expands your testing capabilities to include four definable channels of each; thermocouple, RTD and accelerometer inputs. The TDS software provides temperature and vibration values on the meter screen in addition to screens displaying full-color graphical analysis.



ABC AC Equipment Test Report															
Report Name: ABC_1234567_2007-06-01_15'00'16.xls					Start Date: 6/1/2007										
Start Time: 3:00:16 PM					Dyno Temp Vrb										
Customer: ABC		Job No: 1234567													
Manufacturer: ABC		Model No: 1234567													
Volts: 600		Amps: 200		Serial No: 12-34-56-7											
Flg Volts: 200		Flg Amps: 149.2		RPM: 1748											
% Load:					Technician:										
Comments:															
Date	Time	Volts(L)	Amps(L)	Volts(R)	Amps(R)	Volts(3)	Amps(3)	KW In	PF	T (B-R)	RPM	% Load	HP out	KW out	% ER
6/1/2007	3:00:20 P	463	241	479	238	480	237	197.2	0.89	731.9	1736	100	249	185.6	100
6/1/2007	3:00:20 P	463	241	479	238	480	237	197.2	0.89	731.9	1736	100	249	185.6	100
6/1/2007	3:00:20 P	463	241	479	238	480	237	197.2	0.89	731.9	1736	100	249	185.6	100
6/1/2007	3:00:20 P	463	241	479	238	480	237	197.2	0.89	731.9	1736	100	249	185.6	100
6/1/2007	3:00:21 P	463	241	479	238	480	237	197.2	0.89	731.9	1736	100	249	185.6	100
6/1/2007	3:00:21 P	463	241	479	238	480	237	197.2	0.89	731.9	1736	100	249	185.6	100
6/1/2007	3:00:21 P	463	241	479	238	480	237	197.2	0.89	731.9	1736	100	249	185.6	100
6/1/2007	3:00:21 P	463	241	479	238	480	237	197.2	0.89	731.9	1736	100	249	185.6	100
6/1/2007	3:00:21 P	463	241	479	238	480	237	197.2	0.89	731.9	1736	100	249	185.6	100
6/1/2007	3:00:22 P	463	241	479	238	480	237	197.2	0.89	731.9	1736	100	249	185.6	100
6/1/2007	3:00:22 P	463	241	479	238	480	237	197.2	0.89	731.9	1736	100	249	185.6	100
6/1/2007	3:00:22 P	463	241	479	238	480	237	197.2	0.89	731.9	1736	100	249	185.6	100
6/1/2007	3:00:22 P	463	241	479	238	480	237	197.2	0.89	731.9	1736	100	249	185.6	100
Technician signature: _____										Date: _____					
ABC_1234567_2007-06-01_15'00'16.xls										Page 1 of 1		"JENKINS Test Equipment" Charlotte, NC (800) 438-3003			

The TDS generates detailed, printable test reports. These easy to customize reports include customer, job and motor information in the header, with detailed test data based on your configuration of the channels, test duration and sample rate. Test reports are automatically saved and can be reprinted.

Jenkins Test Documentation System Hardware Options



TDS with a new Jenkins Motor Test System



TDS Add-on Module on an existing Motor Test System



Temperature & Vibration Module

Ordering Information

Description	Part Number	List Price
TDS Software, PC & Operator Console	TDS-SW	\$ 4,200.00
AC Low Voltage Add-on Module (600 VAC)	TDS-ACLV	\$ 2,895.00
AC Medium Voltage Add-on Module (4200 VAC)	TDS-ACMV	\$ 3,995.00
AC High Voltage Add-on Module (7500 VAC)	TDS-ACHV	\$ 7,995.00
DC Add-on Module (600 VDC)	TDS-DC	\$ 5,295.00
Temperature and Vibration Module	TDS-TV	\$ 8,500.00
AW Dynamometer Interface Module	TDS-DI	\$ 595.00

JENKINS

P: 800.438.3003
F: 800.392.2612
sales@jenkins.com
www.jenkins.com

nexjen
systems

P: 800.797.0825
F: 800.797.0826
sales@nexjen.com
www.nexjen.com