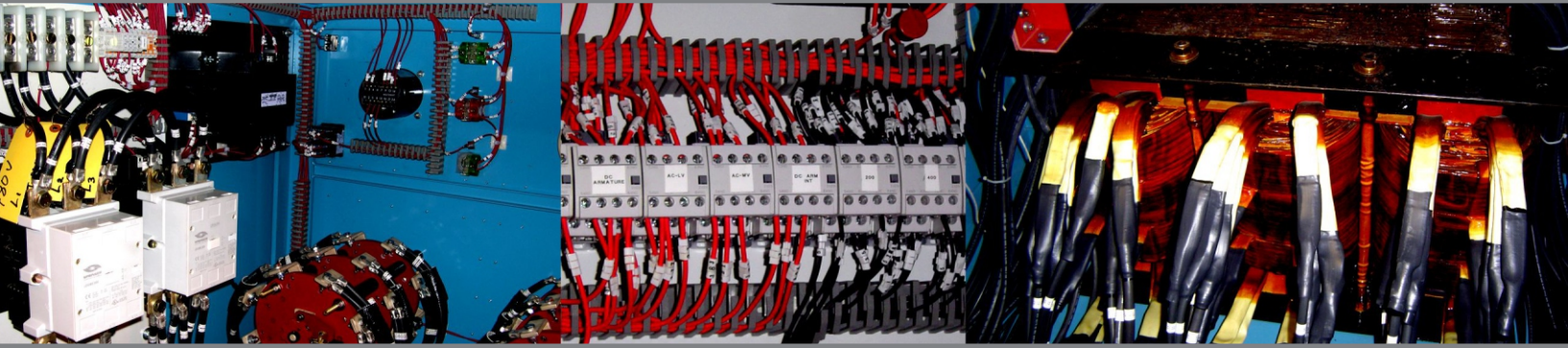


# JENKINS

## Product Data Sheet AC-DC Power Pod



### Product Details

The Power Pod Supplies are an ideal test systems for small shops, or for the small motor testing in larger shops. Available as AC only, DC only or with a combination of AC-DC outputs. Small flexible and powerful, the Power Pod can be combined with our optional Test Documentation System to provide full-service motor testing at an affordable price.

- Designed for no load testing of motors up to 400HP.
- Provides full voltage AC starting on incremental outputs.
- Provides variable 500 volt DC Field and Armature output ranges.
- Simple, Start-Run-Stop push-button operation with a clean, logical controls layout and clear LED instrumentation to display active outputs.
- Overload and Field Loss protection, Plug-in Supercon lead connectors and casters are included.
- Engineered to maintain full capacity outputs at rated current for 8 hours.

### Jenkins Motor Test Systems

Jenkins Motor Test Systems are built on the principles of safe, simple operation and dependable service. With over forty years of experience building electrical test systems to meet client requirements, and a century repairing and testing electrical apparatus ourselves, Jenkins is uniquely qualified to deliver a test system that will meet your needs. Our line of high performance AC-DC Test Systems are specifically designed for motor and transformer testing, and are fully customizable.

### Custom Testing Transformers

Designed and built at Jenkins to our rigid specifications, the testing transformer provides a solid, yet flexible foundation for years of reliable motor test system operation. When combined with an input percentage tap switch and multiple output tap switches, the Testing Transformer can provide a wide range of voltages, closely duplicating a variable transformer, while providing greater reliability during continuous testing, for application to almost any motor.



# Technical Specifications, Upgrades and Ordering Information

## AC-DC Power Pod

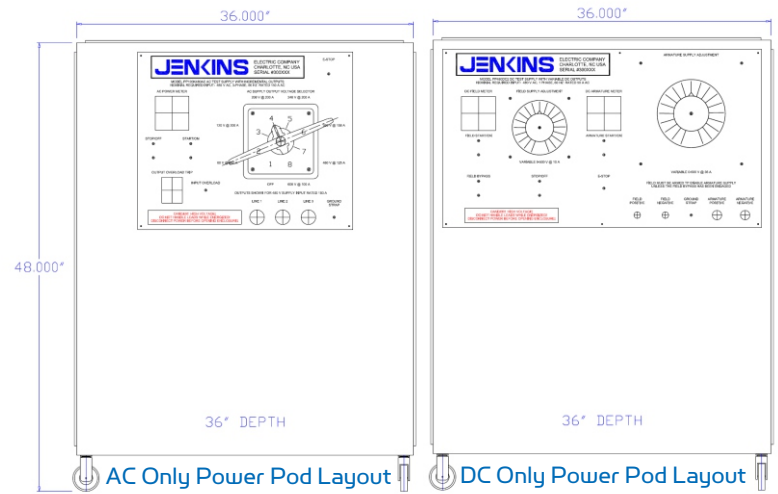
### Ordering Information

| AC Only Test Supply Model          |       | PP75K480AC    | PP100K480AC   |
|------------------------------------|-------|---------------|---------------|
| List Price                         |       | \$17,850.00   | \$23,500.00   |
| 3-Phase Supply Input Required      | Volts | Amps          | Amps          |
| AC Outputs:                        | 60    | 150           | 200           |
|                                    | 120   | 150           | 200           |
|                                    | 208   | 150           | 200           |
|                                    | 240   | 150           | 200           |
|                                    | 380   | 114           | 158           |
|                                    | 480   | 90            | 125           |
| Percentage Adjustments             | 90%   | Input Tap     | Input Tap     |
|                                    | 100%  | Input Tap     | Input Tap     |
|                                    | 110%  | Input Tap     | Input Tap     |
| AC Full Voltage Starting           |       | Yes           | Yes           |
| AC Output Current Limit Protection |       | Yes - 1 Level | Yes - 1 Level |
| Meter Display                      |       | Blue LED      | Blue LED      |
| Cabinet Dimensions (HxWxD)         |       | 48"x36"x36"   | 48"x36"x36"   |

| DC Only Test Supply Model         |       | PP480DC1      | PP480DC2      |
|-----------------------------------|-------|---------------|---------------|
| List Price                        |       | \$18,125.00   | \$22,250.00   |
| 1-Phase Supply Input Required     | Volts | Amps          | Amps          |
| DC Field Variable Output          | 0-500 | 9.5           | 10            |
| DC Field Current Limit Protection |       | Yes - 1 Level | Yes - 1 Level |
| DC Field Loss Protection          |       | Yes           | Yes           |
| DC Field Temporary Bypass         |       | Yes           | Yes           |
| DC Armature Variable Output       | 0-500 | 28            | 35            |
| DC Armature Output Current Limit  |       | Yes - 1 Level | Yes - 1 Level |
| Meter Display                     |       | Blue LED      | Blue LED      |
| Cabinet Dimensions (HxWxD)        |       | 48"x36"x36"   | 48"x36"x36"   |

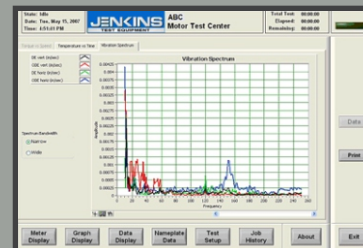
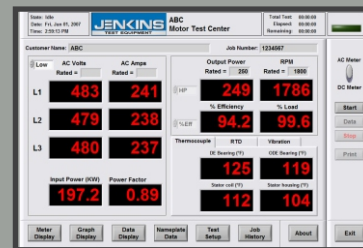
| AC-DC Test Supply Model            |       | PP75K480ACDC  | PP100K480ACDC |
|------------------------------------|-------|---------------|---------------|
| List Price                         |       | \$26,550.00   | \$32,750.00   |
| 3-Phase Supply Input Required      | Volts | Amps          | Amps          |
| AC Outputs:                        | 60    | 150           | 200           |
|                                    | 120   | 150           | 200           |
|                                    | 208   | 150           | 200           |
|                                    | 240   | 150           | 200           |
|                                    | 380   | 114           | 158           |
|                                    | 480   | 90            | 125           |
| Percentage Adjustments             | 90%   | Input Tap     | Input Tap     |
|                                    | 100%  | Input Tap     | Input Tap     |
|                                    | 110%  | Input Tap     | Input Tap     |
| AC Full Voltage Starting           |       | Yes           | Yes           |
| AC Output Current Limit Protection |       | Yes - 1 Level | Yes - 1 Level |
| DC Field Variable Output           | 0-500 | 9.5           | 10            |
| DC Field Current Limit Protection  |       | Yes - 1 Level | Yes - 1 Level |
| DC Field Loss Protection           |       | Yes           | Yes           |
| DC Field Temporary Bypass          |       | Yes           | Yes           |
| DC Armature Variable Output        | 0-500 | 28            | 35            |
| DC Armature Output Current Limit   |       | Yes - 1 Level | Yes - 1 Level |
| Meter Display                      |       | Blue LED      | Blue LED      |
| Cabinet Dimensions (HxWxD)         |       | 48"x36"x36"   | 48"x36"x36"   |

### Physical Dimensions



### Optional Upgrades

- TDS Temperature and Vibration Module
  - 4 Each: TC, RTD and Vibration Channels
  - Graphical Data Display



**JENKINS**

P: 800.438.3003  
F: 800.392.2612  
sales@jenkins.com  
www.jenkins.com

**ESSEX BROWNELL**

P: 800.774.4643  
F: 800.768.9782  
www.essexbrownell.com